

Environment and Sustainable Communities Overview and
Scrutiny Committee
24 February 2023

Bereavement Services

Graham Harrison

Ian Houlton



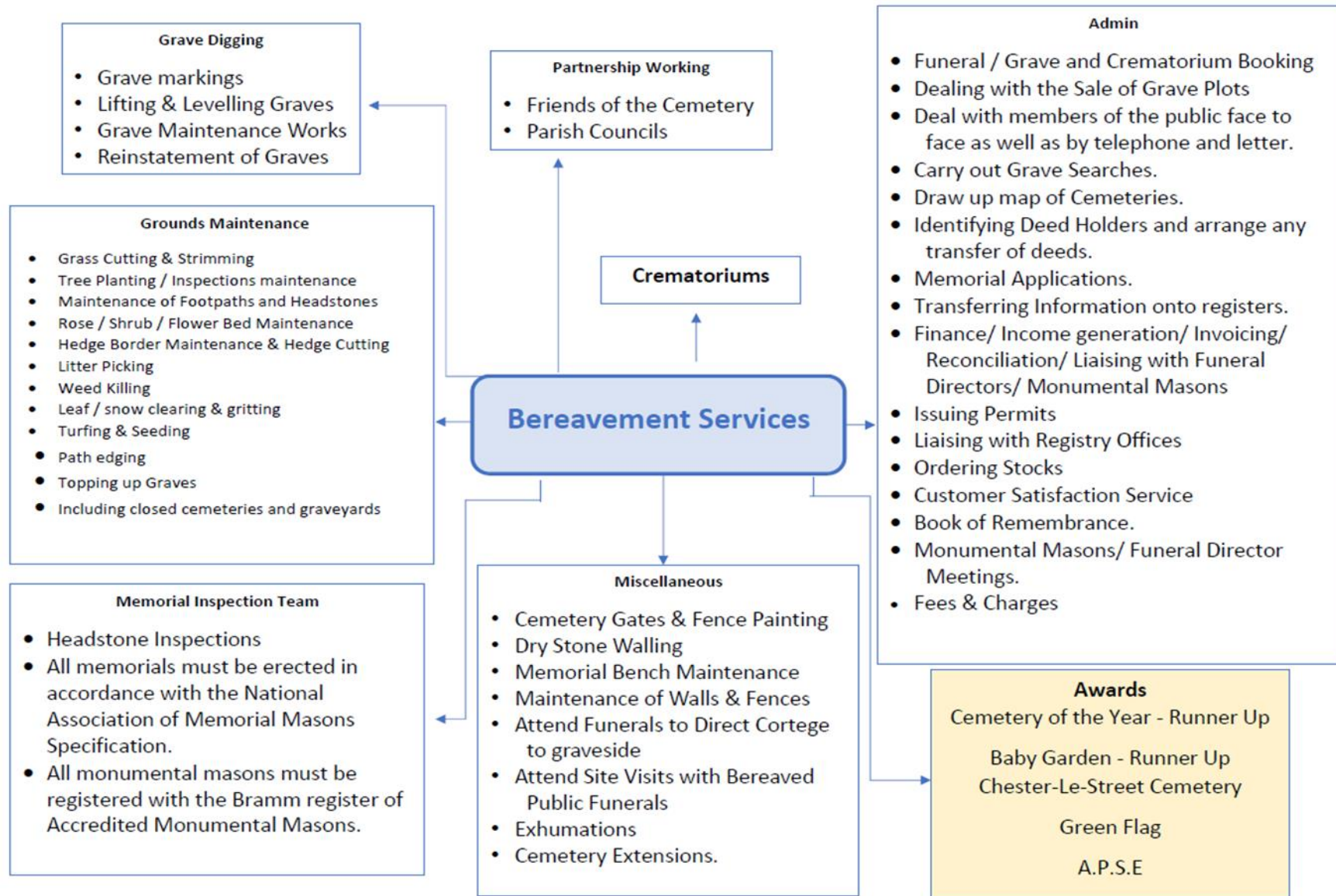
What will we cover?

- What the service covers and who does what
- Key issues
 - Covid
 - Sensitivity
 - Funeral Poverty
 - Carbon
 - Burial Space
 - Future Developments

What does Bereavement Services Cover

- Crematoria – Mountsett & Central Durham
- Cemeteries – 46 open, 98 closed/ church yards
- Woodland burials
- Public funerals
- Cemetery development
- Technical expertise
- Memorial safety
- Community involvement

What we do?



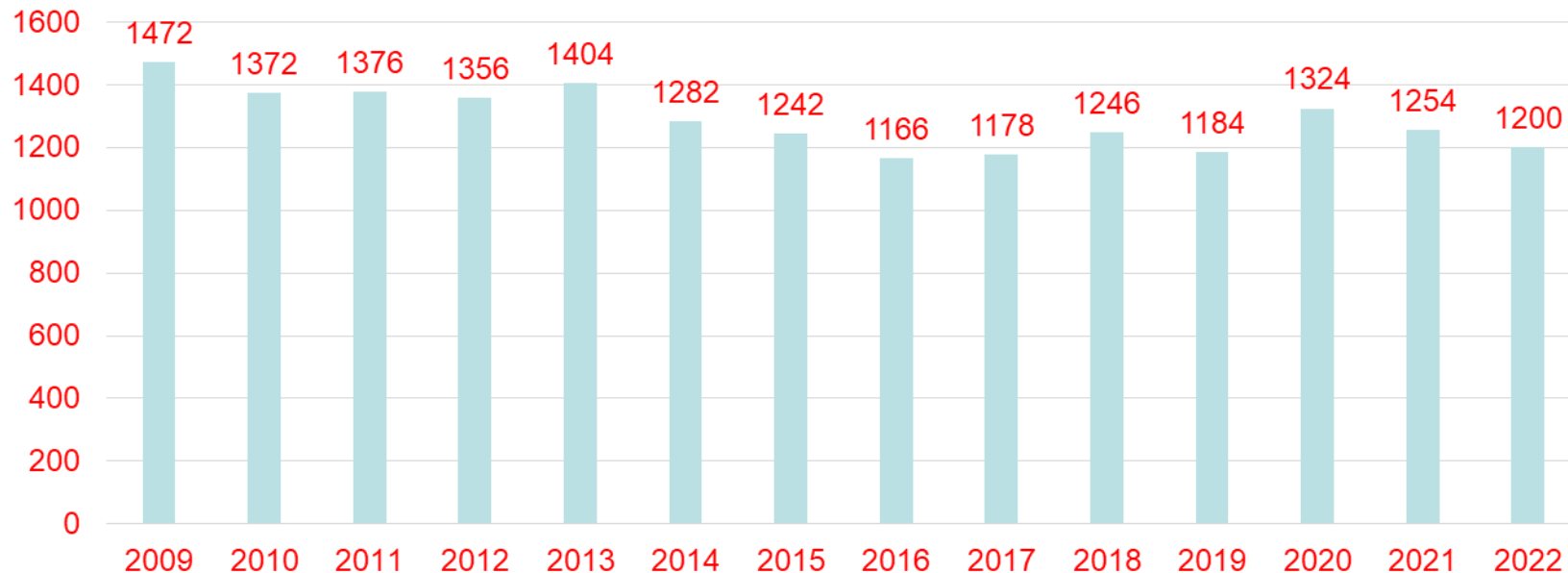
Cemeteries



Cemeteries

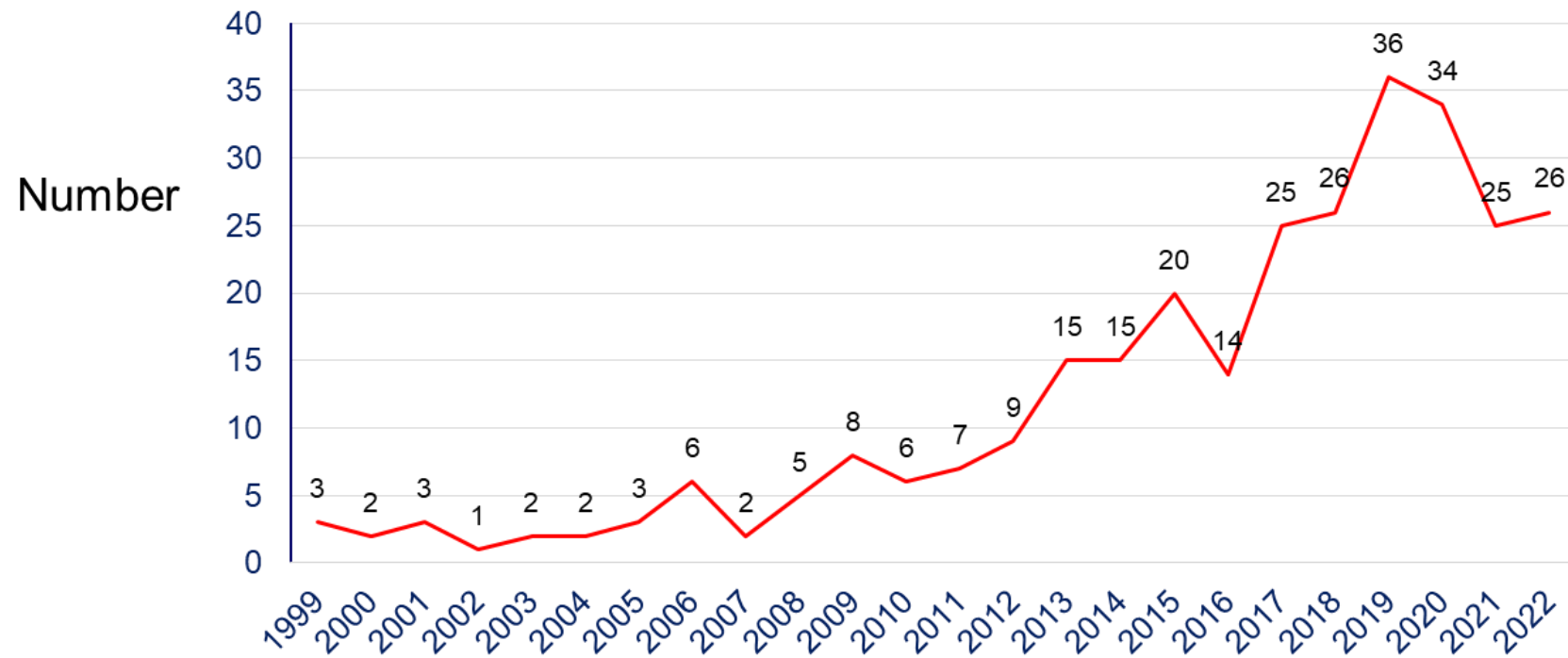
- Who provides – DCC, Parish & Faith
- Settings – Cemeteries, closed church yards & woodland site
- Provision – Burials, maintenance, headstone inspections
- Awards – Green Flag, Cemetery of the Year
- Key issues – sensitivity, burial space, funeral poverty, regulation & Covid

Burial numbers including full burials/re-open and ashes burials



Public Health Funerals

Statutory Duty - A local authority **must** make arrangements for the funerals of people who die or are found dead in their area where no other arrangements are being made.



Headstones

- Strimming
- Weedkilling
- Growth Retardant
- Future



Woodland Burial Site

- Alternative to traditional funerals, cemeteries and graveyards.
- Alternative grave and memorial choice.
- Return to nature.
- Environmentally friendly
- Friends of Durham Woodland Cemetery



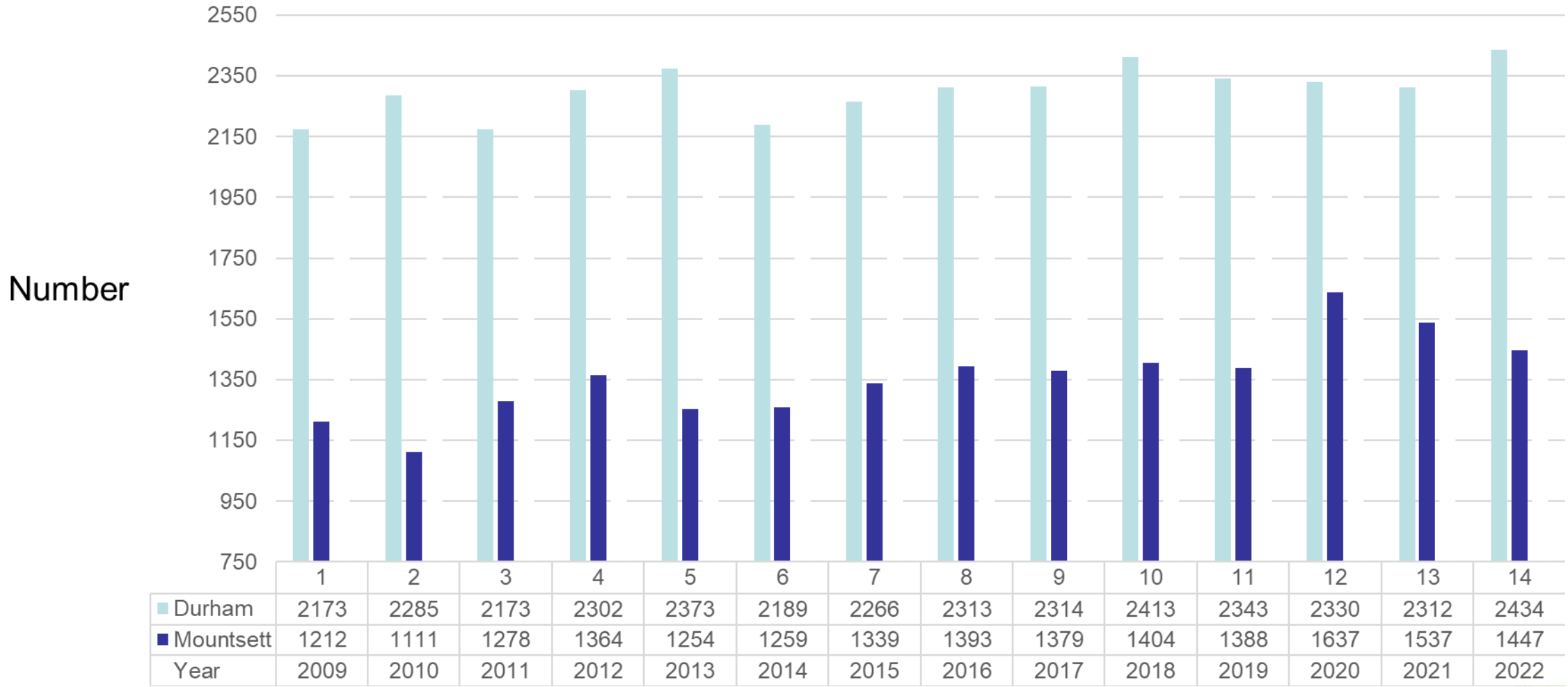
Burial Space

- Cemeteries have a fixed amount of space
- 4 sites identified as full or close to being full
 - Barnard Castle, Bishop Auckland, Meadowfield & Witton Park
- Limited scope to expand
- Most cemeteries have an alternative within 4 miles

Crematoria

- Who provides – DCC (joint venture) & private
- Provision – Wesley music system, organ, webcasting of services, recordings, books of remembrances, memorials, recycling of metals
- Investment & development
 - Increased parking, separate book of remembrance building, energy improvements, chapel and office improvements. Solar panels and electric charging points.
 - Mercury Abatement compliance
- Awards – Charter for the Bereaved, Green flag, A.P.S.E.
- Key issues – sensitivity, regulation, funeral poverty & Covid

Cremation numbers



Durham Crematorium



Mountsett Crematorium



Re-cycling of metals

- Metals remaining after cremation
- Ortho Metals B. V.
- Proceeds are returned to the crematoria by OrthoMetals.
- So far £284,276 given to local death related charities by both crematoriums.



Memorialisation

- Memorial gardens Durham Crematorium.
- Large and small plaques.
- Vase blocks(Durham only).
- Niche units (Durham only).
- Seats
- Memorial trees.(Durham & Mountsett)
- Memorial towers (Mountsett only)



Achievements so far



Key Issues

- Sensitivity of the service
- Regulation
- Funeral Poverty
- Burial space
- Carbon

Future developments

- Resomation
- Continued response
Ecological emergency



Thank you!

Questions?